

# Colour Cote™

## Spray-on-Glass

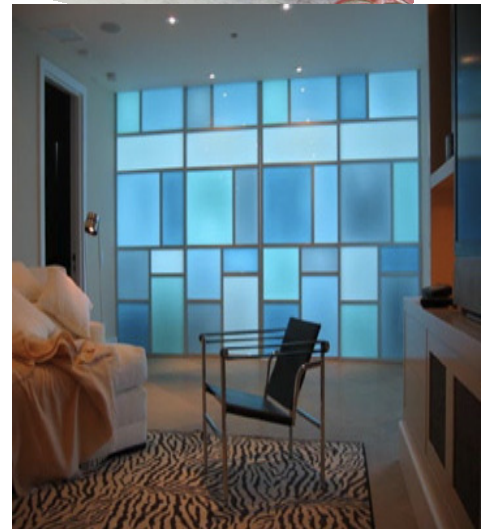
**Colour Cote™** is an innovative spray-on-glass painting system, enabling glass fabricators to easily produce an infinite range of colors in house. The paint is applied at room temperature and dries to the touch within 1 hour. Even the smallest glass fabricator now has the opportunity to produce unique new looks for ever-more demanding architects and clients.

The applications and advantages of **Colour Cote™** are endless. Besides the beautiful appearance, glass is a non-porous, water resistant, low maintenance building material; unlike marble, grout-jointed ceramic tiles and veneers. It is also an extremely hygienic material, ideal for use in kitchens, bathrooms, and any wet room applications.

When used as a wall cladding, **Colour Cote™** is simply bonded to the wall or surface using a low modular silicone or standard mastic, or the glass can be mechanical fixed.



[www.glasslam.com](http://www.glasslam.com)



## ***OPTION 1: A range of 6 Standard Colors***

	White	Black	Silver	Red	Yellow	Blue
Pantone#	1234	1234	1234	1234	1234	1234

Supplied as a 2-Component Kit. Each Kit will yield approximately 350 sq. ft. with 6-8 microns coverage

## ***OPTION 2: Endless selection of custom colors made by Glasslam***

in accordance with Pantone or RAL Charts, or from a color swatch supplied by the customer.

## ***OPTION 3: The In-House Mixing System***

This unique system includes 22 pigments, an automatic mixing station, and proprietary software, which enables the you to easily and instantly duplicate RAL, Pantone, and visual Swatch Colors. Just follow the formula to quickly mix the desired color in your house!

***There is no waste and no waiting because you mix only what you need, when you need it!***



**Colour Cote™** has been independently tested to assure a durable and reliable finish. Some 3rd party tests to date are:

*ASTM D3359 Adhesion Test  
BS EN ISO 4624 Adhesion Test  
SAE J 1960 Accelerated*

**Glasslam, N.G.I., Inc.**  
**Pompano Beach, FL**  
**Tel. 954-975-3233**  
**www.glasslam.com**

